

COVID-19



Community Partners' Call 5.11.22

Becky Reitzes, MA
Becky.Reitzes@kingcounty.gov

Public Health
Seattle & King County 

Agenda



Welcome and Introductions

King County Cases and Vaccine
Rate Update

Changes Coming to King County
COVID Test Sites

New Medication for People Who are
Immunocompromised (Pre Exposure)

Pregnancy, COVID, Vaccines and
Boosters

Resources and THANK YOU!



KING COUNTY COVID UPDATE

KC COVID CASE RATES

READY TO GET YOUR COVID-19 BOOSTER?

Drop-in and same day
appointments available now.

For Locations and Information:
kingcounty.gov/vaccine

Public Health 
Seattle & King County



KC COVID RATES

King County's rate of COVID-19 cases now puts us into the **Medium COVID-19 Community Level** as defined Center for Disease Control (CDC) **over 200 new COVID-19 cases per 100,000 people over a seven-day period.**

This tells us that COVID-19 risk is increasing for individuals and for our communities.

However, daily admission and hospital capacity remain in the "low" category.

We can use this information to lower our own risk and those around us by increasing our protection.

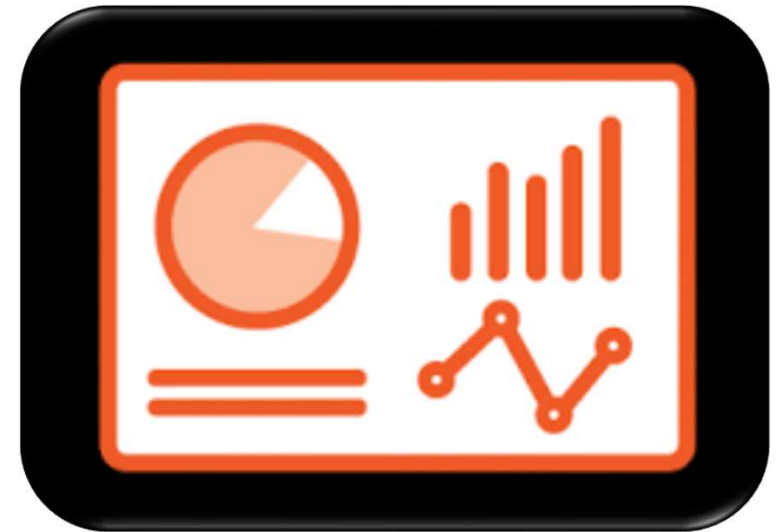
Medium

- If you are at high risk for severe illness, talk to your healthcare provider about whether you need to wear a mask and take other precautions
- Stay up to date with COVID-19 vaccines
- Get tested if you have symptoms

KC COVID RATES

Case Trends:

- 9% increase week to week
- COVID Cases continue to increase but have slowed this week.
- Rates are highest among 18–49-year-old residents, with 30–49-year-olds catching up to 18–29-year-olds this week. Rates continue increase across all age groups.
- Rates are highest in North Seattle/Shoreline and lowest in Auburn/Kent/Federal Way and South East King County.
- BA.2 is still the most common variant in the county and state.



KC COVID RATES

Cases

1,006 daily average cases

11 daily average hospitalizations

2 daily average deaths

9% increase
in the last 7-days (7,039)
from the prior 7-days (6,448)

-6% decrease
in the last 7-days (74)
from the prior 7-days (79) **!**

69% increase
in the last 14-days (22)
from the prior 14-days (13)

PCR Testing

6,268 daily average
PCR tests

14.6% PCR test
positivity in the last 7
days

PCR Test Positivity



KC COVID VACCINE RATES





PHSKC COVID-19 Vaccine Administration Summary May 11, 2022

All data are preliminary. Please do not distribute outside of PHSKC.

Summary of overall uptake [COVID-19 vaccination summary public dashboard](#)

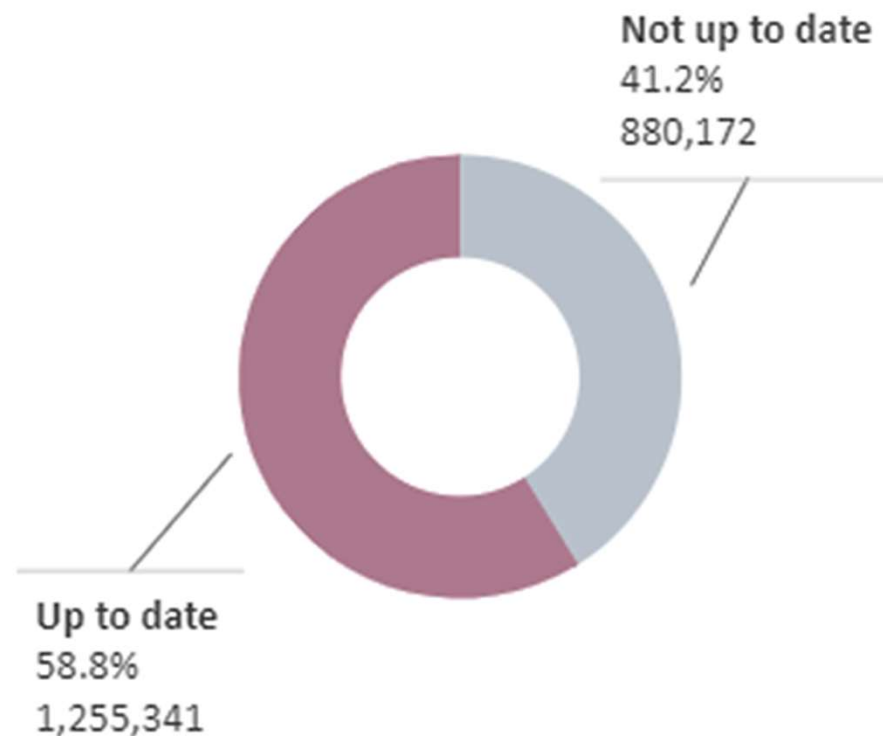
<i>King County population</i>	<i>At least 1 dose</i>	<i>Completed primary series</i>	<i>With a booster</i>
All King County residents (2.26 million)	88.3%	81.0%	49.0%
Residents, ages 5+ (2.14 million)	93.5%	85.8%	51.9%
Residents, ages 12+ (1.95 million)	96.7%	88.9%	56.7%

KC COVID VACCINE RATES

Overall Rates:

- 88% of the King County residents have at least 1 dose,
- 81% have completed their primary series,
- 49% have received an additional/booster dose
- Among residents 5 years and older, 58.7% are currently up to date on vaccinations,
- This percentage is slowly starting to go down as the number who are eligible for a booster increases.

What percentage of King County residents are up to date on their COVID-19 vaccines and boosters?



**COVID-19
CASE
OUTCOMES
BY
VACCINATION
STATUS**



REMINDER: COVID-19 CASE OUTCOMES BY VACCINATION STATUS

What does it mean when we say that the vaccines are effective?

Pfizer and Moderna **are really good** at protecting people from:

- ✓ Getting Seriously Sick from COVID
- ✓ Being Hospitalized from COVID
- ✓ Dying from COVID



If someone gets COVID when they are up-to-date with their vaccines, they will usually get a mild case of COVID.

COVID-19 CASE OUTCOMES BY VACCINATION STATUS

- COVID-19 Vaccines are highly effective at preventing serious illness, hospitalization and death from COVID-19.
- However, since no vaccine is 100% protective, we expect to see we expect to see cases of COVID even when the vaccines continue to work well.
- A good way to measure how well these vaccines work against the risks of COVID-19 between people who are not vaccinated and people who are fully vaccinated and people who are up to date with their vaccines.
- By comparing the risks between these groups, it becomes clear that the risk of catching COVID-19, of being hospitalized, or of dying is far higher for people who are not vaccinated.

IN THE PAST 30 DAYS

Cases

People who are **not fully vaccinated** are:

1.1x

more likely to test positive for COVID-19 than **boosted** individuals

Over the past 30 days, after adjusting for age and time, people who are **NOT fully vaccinated** are:

1.1 times more likely to test positive for COVID-19 than people **who are boosted**.

1.8 times more likely to test positive for COVID-19 than for people who are **fully vaccinated without a booster**.

Hospitalizations

People who are **not fully vaccinated** are:

6x

more likely to be hospitalized for COVID-19 than **boosted** individuals

Over the past 30 days, after adjusting for age and time, people who are **NOT fully vaccinated** are:

6.4 times more likely to be hospitalized for COVID-19 than people **who are boosted**.

5.4 times more likely to be hospitalized for COVID-19 than people who are **fully vaccinated without a booster**.

Deaths

People who are **not fully vaccinated** are:

11x

more likely to die of COVID-19 related illness than **boosted** individuals

Over the past 30 days, after adjusting for age and time, people who are **NOT fully vaccinated** are:

11.4 times more likely to test for COVID 19 than people **who are boosted**.

5 times more likely die due to a COVID related illness than people who are **fully vaccinated without a booster**.

**CHANGES
COMING TO
KING COUNTY
TESTING SITES**



CHANGES COMING TO KING COUNTY TESTING SITES

As COVID-19 case rates have fallen and as the availability of free rapid self-test and community testing options have increased, demand at King County operated test sites has significantly declined.

These testing sites were created when the need for testing was at a critically high level.

- ✓ With federal funding decreasing,
- ✓ A lower demand for testing
- ✓ And increased availability of rapid self-testing and other community testing options -

Public Health is transitioning away from emergency response into long-term COVID prevention management.

CHANGES COMING TO KING COUNTY TESTING SITES

To better align with demand and transition to long-term testing solutions, PHSKC is ending operations of the Tukwila, Federal Way and Auburn COVID-19 testing sites.

- The last day of King County-operation for the Federal Way and Tukwila testing sites will be Friday, May 27.
- The last day of King County-operation for the Auburn testing sites will be June 1.

Ensuring free COVID-19 testing remains easily accessible is a top priority, especially in communities that are at highest risk.

We're working with healthcare partners to expand long-term testing operations in south King County which may include re-opening testing site operations at existing locations and/or opening testing sites at other locations.

We look forward to announcing more information in the coming weeks.

CHANGES COMING TO KING COUNTY TESTING SITES

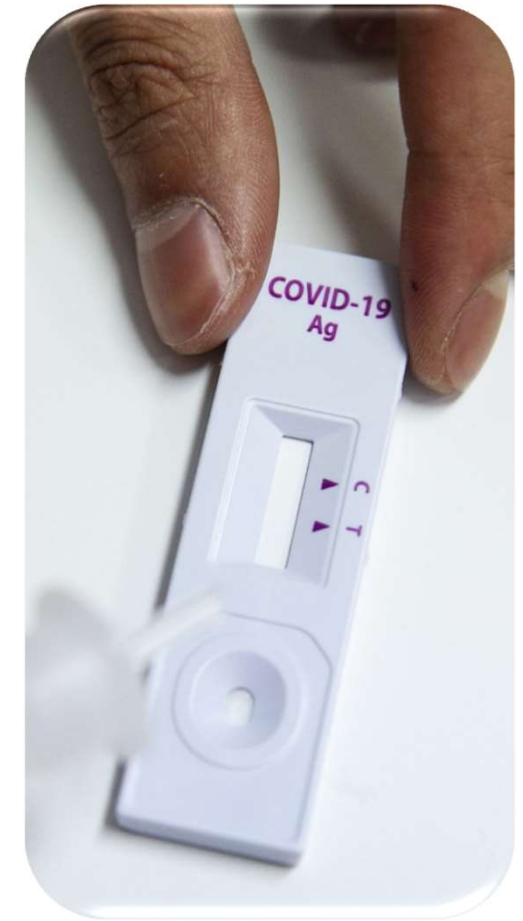
Thank you to the dedicated staff, volunteers and partner organizations who worked so hard the past two years to provide accessible and equitable COVID-19 testing to our most vulnerable communities.



HOW TO ACCESS FREE TESTING

Free rapid self-tests are available through these sources:

- Department of Health – www.sayyescovidhometest.org or 1-800-525-0127
 - ❖ Households can order additional tests monthly
- Federal government – www.covidtests.gov or 1-800-232-0233
 - ❖ Every home in the U.S. may place two orders, for a total of 4 free at-home tests



Visit kingcounty.gov/covidtesting for a current list of free testing sites in King County.

**IMMUNOCOMPROMISED?
YOU MAY BE ELIGIBLE FOR
THIS MEDICATION TO HELP
PROTECT FROM COVID
ILLNESS**



<https://publichealthinsider.com/2022/05/05/immunocompromised-this-medication-can-protect-before-covid-exposure/>

IMMUNOCOMPROMISED? YOU MAY BE ELIGIBLE FOR THIS MEDICATION

If you are at higher risk from COVID-19 because of a compromised immune system, pre-exposure prophylaxis can help to protect from severe disease when taken before infection or exposure.

When taken before infection or exposure, **Evusheld** helps your body fight the coronavirus and avoid getting really sick or needing to visit the hospital.

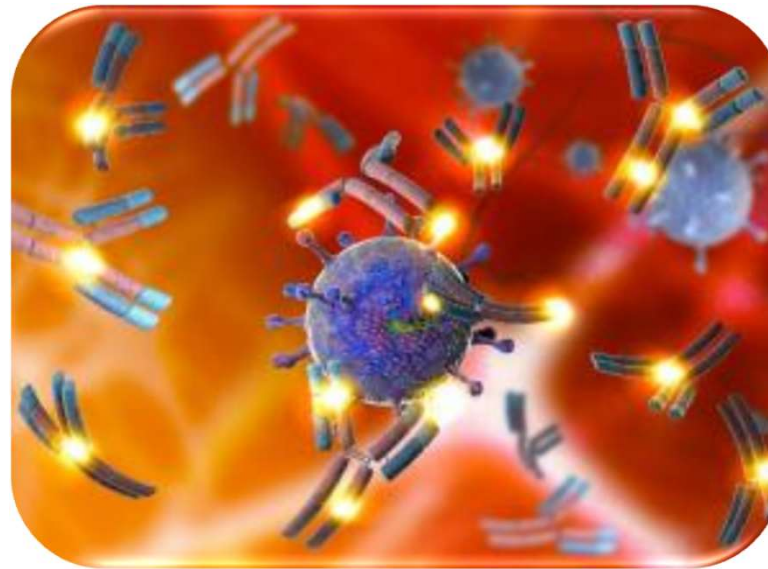
The medication is only available for people who have moderate to severely compromised immune systems.



IMMUNOCOMPROMISED? YOU MAY BE ELIGIBLE FOR THIS MEDICATION

What is it?

- EVUSHELD is a preventative treatment used before someone gets COVID-19.
- It is given as 2 injections into the muscle given during the same visit. This is not for the treatment of COVID-19.
- Evusheld is a combination of two long-acting antibodies.
- Follow-up doses may be needed every 3-6 months based on your health situation.



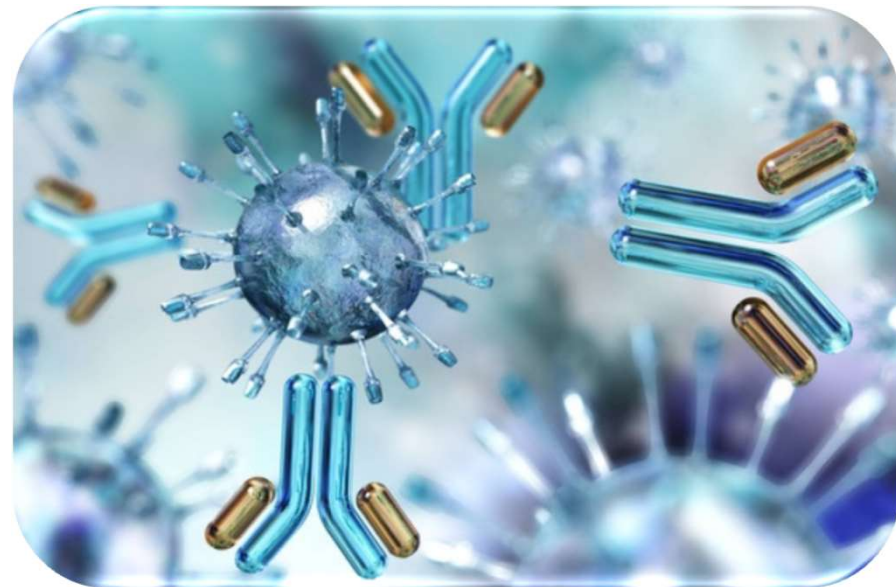
<https://publichealthinsider.com/2022/05/05/immunocompromised-this-medication-can-protect-before-covid-exposure/>

https://birdseyemedical.com/evusheld_treatments/

IMMUNOCOMPROMISED? YOU MAY BE ELIGIBLE FOR THIS MEDICATION

How does it work?

- EVUSHELD is not a replacement for the COVID-19 vaccine.
- Vaccines prepare your immune system to respond quickly if you are exposed to COVID-19.
- EVUSHELD boosts your immune system by helping to prevent or lessen the severity of a COVID-19 infection.
- It binds to the virus and prevents COVID from entering human cells and multiplying in the body.
- A recent study indicates that it reduces your risk of being severely ill, hospitalized or dying from COVID.



https://birdseyemedical.com/evusheld_treatments/

<https://publichealthinsider.com/2022/05/05/immunocompromised-this-medication-can-protect-before-covid-exposure/>

IMMUNOCOMPROMISED? YOU MAY BE ELIGIBLE FOR THIS MEDICATION

Am I eligible?

- You may be able to get this medication if you are 12 years or older and weigh more than 88 pounds if:
- You have a weakened immune system because of a medical condition or are taking a medication that affects your immune system, OR
- You are unable to receive a complete COVID-19 vaccine series because of a severe reaction to a previous COVID-19 vaccination or component of the vaccine, AND
- You are not currently infected with COVID-19, **AND**
- You have not been in close contact with or exposed to someone who has COVID-19 in the last ten days.

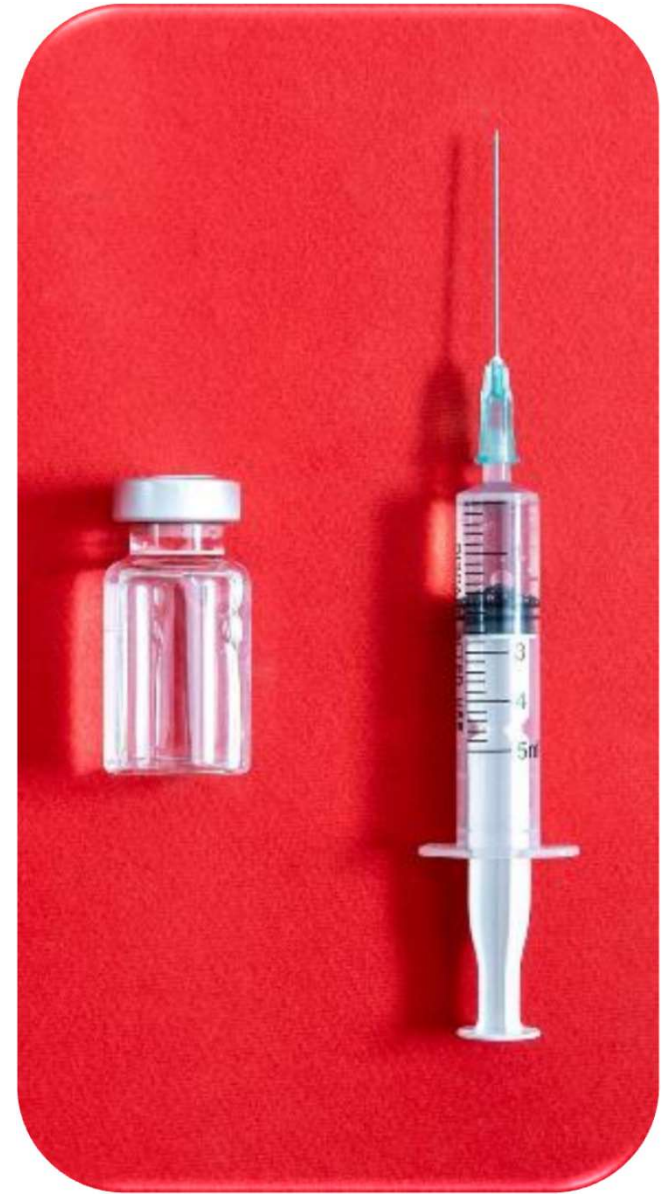
IMMUNOCOMPROMISED? YOU MAY BE ELIGIBLE FOR THIS MEDICATION

Evusheld is not a replacement for COVID-19 vaccines.

Everyone eligible to receive a COVID-19 vaccines and boosters are recommended to get the vaccines and boosters.

If someone has recently gotten a vaccine or booster, the person needs to wait at least two weeks before receiving Evusheld.

If you are eligible for Evusheld, it is important to get protected early.



EVUSHELD AND FERTILITY, PREGNANCY AND BREAST/CHESTFEEDING

There is currently not enough data to know if Evusheld:

- **Is safe to use during pregnancy**
- **If it causes infertility** – makes someone not be able to get pregnant or get someone else pregnant
- **Or it impacts fertility** - the ability for someone to get pregnant or get someone pregnant in the future.

There is no data to know if it is safe to use while breast/chestfeeding.



https://ww2.health.wa.gov.au/~/_media/Corp/Documents/Health-for/Infectious-disease/COVID19/Treatment/Patient-Information--Tixagevimab-plus-cilgavimab-EVUSHELD.pdf

<https://www.astrazeneca-us.com/media/press-releases/2021/evusheld-long-acting-antibody-combination-retains-neutralizing-activity-against-omicron-variant-in-independent-fda-study.html>

IMMUNOCOMPROMISED? YOU MAY BE ELIGIBLE FOR THIS MEDICATION

- Talk to your healthcare provider to see if you are eligible for **Evusheld**.
- If you do not currently have health insurance, you may be able to receive Evusheld free of charge from Birds Eye Medical—check their website for more details.
https://birdseyemedical.com/evusheld_treatments/
- You can also find a list of resources for uninsured individuals on the Washington State Department of Health’s COVID-19 therapeutics page, along with the latest updates on COVID treatment options.
- The Disability Information and Access Line (DIAL) can help people with disabilities access services.
- Call 1-888-677-1199, Monday-Friday from 6 am to 5 pm, or email DIAL@usaginganddisability.org. Interpretation is available.

THESE MEDICATIONS ARE NOT A REPLACEMENT FOR COVID-19 VACCINES AND BOOSTERS!

It is very important for all of us – and especially those with compromised immune systems – to continue using layered prevention measures.

- ✓ Staying up to date with vaccinations, including an extra primary series dose and boosters when eligible,
- ✓ Wearing high-quality masks (like N95, KN95, KF94),
- ✓ Avoiding crowded indoor settings,
- ✓ Improving ventilation and air quality,
- ✓ Physical distancing,
- ✓ And testing after exposure or if you have symptoms.



**VACCINE
STATUS FOR
6 MONTHS OLDS
TO
4 YEAR OLDS**



VACCINE STATUS FOR 6 MONTHS – 4 YEAR OLDS

REMINDER: Moderna and Pfizer work really well against preventing severe illness, hospitalization and death.

Moderna is seeking FDA Emergency Use Approval to release a two-dose vaccine.

The vaccine is about 43.7% effective at preventing children ages 6 months to less than 2 years from getting COVID and 37% effective for those ages 2 to less than 6 years old at getting COVID.



VACCINE STATUS FOR 6 MONTHS – 4 YEAR OLDS

While that level of effectiveness is lower than many had hoped, it's not surprising given the study was conducted during the Omicron surge.

Even during the Omicron surge, the Moderna vaccine greatly reduced the risk of getting COVID.

Most importantly, the majority of COVID cases were mild, and there were no severe COVID-19 disease cases for those children who were given the vaccine.



VACCINE STATUS FOR 6 MONTHS – 4 YEAR OLDS

- February 15th FDA meeting was set to review a 2-dose COVID vaccine series EUA submission. This meeting has been postponed to review new data from Pfizer.
- Pfizer expects three-dose vaccine protection.
- We are still waiting on the updated data.



PFIZER VACCINE STATUS FOR 6 MONTHS – 4 YEAR OLDS

We expect vaccines for 6-months-olds to 4-year-olds to be available sometime around mid-to-late June.

In the meantime, measures to protect young children include:

- Vaccinations and boosters for eligible family members and caregivers.
- Well-fitting, high-quality masks among eligible children and caregivers.
- Improved air ventilation in indoor spaces.



PREGNANT AND LACTATING PEOPLE, COVID-19, THE COVID-19 VACCINES AND BOOSTERS



COVID-19 & PREGNANCY

HERE'S A FEW
THINGS YOU
SHOULD
KNOW...



COVID-19 & PREGNANCY

Pregnancy causes changes in the body that could make it easier to get very sick from respiratory viruses like the one that causes COVID-19.

These changes can continue after pregnancy.



COVID-19 & PREGNANCY

Pregnant people and recently pregnant people are at an increased risk for severe illness from COVID-19 when compared to non-pregnant people.

Certain underlying medical conditions, and other factors, including age, can further increase a pregnant or recently pregnant person's risk for developing severe COVID-19 illness for 42 or more days following end of pregnancy.



COVID-19 & PREGNANCY

Pregnant people with COVID-19 are at increased risk for delivering their baby earlier than 37 weeks and might be at increased risk for other poor pregnancy outcomes.

Compared to people who are NOT pregnant, with COVID and have symptoms, people who are pregnant with COVID with symptoms:

- Are more than twice as likely to need treatment in an ICU, a ventilator, or life support.
- Are 70% more likely to have illness ending in death
- May have an increased risk of preeclampsia (a serious blood pressure disorder) and coagulopathy (a blood clotting disorder).



College of Obstetricians and Gynecologists <https://www.acog.org/womens-health/faqs/coronavirus-covid-19-pregnancy-and-breastfeeding>

COVID-19 & PREGNANCY

It is especially important for pregnant and recently pregnant people, and those who live with or visit them, to protect themselves from getting sick with COVID-19.



COVID-19 & PREGNANCY

COVID-19 vaccinations and boosters are recommended for all people who are pregnant, recently pregnant, lactating, trying to get pregnant now, or might become pregnant in the future.

The benefits of getting the COVID Vaccine for pregnant people outweigh known or



COVID-19 & PREGNANCY:

IF YOU HAVE COVID-19 AND ARE BREAST/CHEST FEEDING

- Studies tell us that COVID-19 does not pass through breast milk and does not cause infection in the baby.
- Breast milk is the best source of nutrition for most babies.
- Breast milk helps protect babies from infections, including infections of the ears, lungs, and digestive system.
- For these reasons, having COVID-19 should not stop you from giving your baby breast milk.

If you plan to breastfeed, talk with your doctor or provider.

College of Obstetricians and Gynecologists <https://www.acog.org/womens-health/faqs/coronavirus-covid-19-pregnancy-and-breastfeeding>

COVID-19 & PREGNANCY :

IF YOU HAVE COVID-19 AND ARE BREAST/CHEST FEEDING

How can I avoid passing COVID-19 to my baby?

- Use a face mask or covering when holding your baby, including during feeding. Do **not** put a mask or covering over the baby's face.
- Wash your hands before touching your baby.
- Wash your hands before touching any breast pump or bottle parts and clean all pump and bottle parts after use.
- If possible, let someone who is healthy help care for your newborn. They can bottle-feed your breast milk to your baby after you pump. They should wear a mask and keep their hands clean. And they should not be at risk of severe illness from COVID-19.

College of Obstetricians and Gynecologists <https://www.acog.org/womens-health/faqs/coronavirus-covid-19-pregnancy-and-breastfeeding>

COVID-19 & PREGNANCY ADDITIONAL FACTS

COVID Vaccines will NOT:

- Cause infertility (when someone can't get pregnant or get someone else pregnant) or make it harder to get pregnant or get someone else pregnant.
- Reduce sperm count.
- Increase the risk of miscarriages during pregnancy.
- Give anybody COVID-19, including in people who are pregnant or their babies.

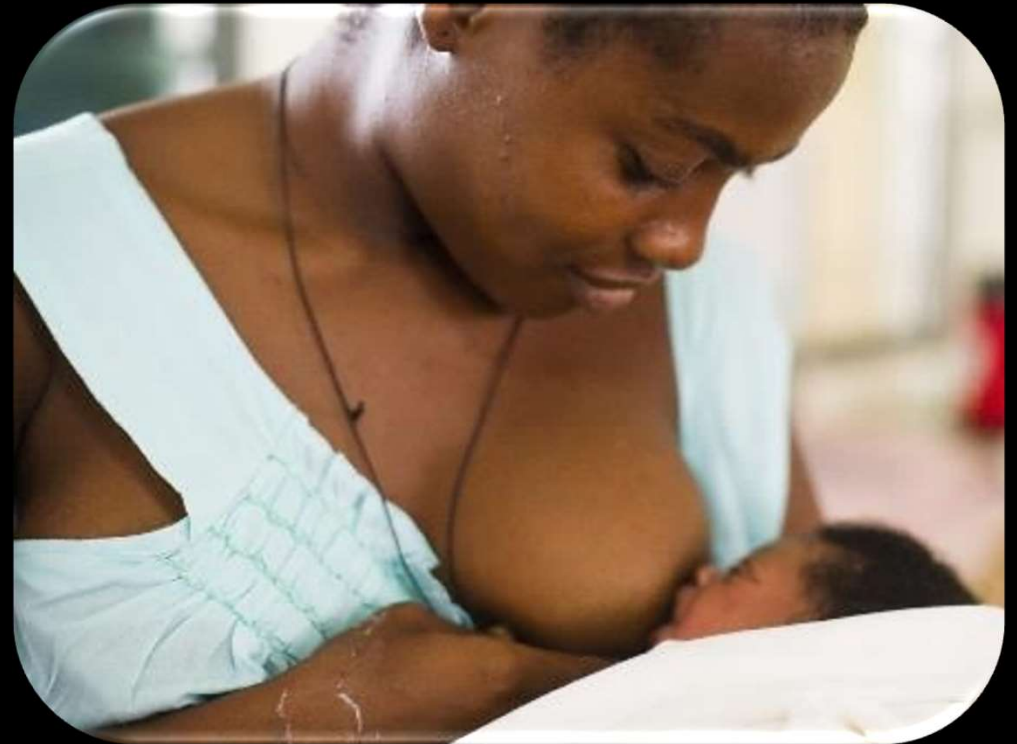


College of Obstetricians and Gynecologists <https://www.acog.org/womens-health/faqs/coronavirus-covid-19-pregnancy-and-breastfeeding>

COVID-19 VACCINE & PREGNANCY

When vaccinated, antibodies are shared through the pregnancy and breast / chest feeding.

This means that not only is the vaccine protecting the person who is pregnant, it is also protecting the pregnancy and baby against COVID-19.





COVID and Pregnancy Resources

COVID-19 Boosters & Pregnancy



Pregnant People Can Receive a Booster:

Everyone, age 12 and older, should get a booster dose:

- **5 months** after the 2nd dose of Pfizer or Moderna (note: ages 12-17 can only get Pfizer)
- **2 months** after 1 dose of J&J

The Pfizer or Moderna vaccines are recommended over J&J for both initial and booster vaccinations.

Have COVID-19 Vaccine Questions?

Experts at **MotherToBaby** can answer your questions by phone, email, or chat. You can get **FREE**, confidential service in English and Spanish Mon - Fri, from 8am-5pm.

mothertobaby.org/ask-an-expert
1-866-626-6847

Ready To Get a Booster Dose?

FREE COVID-19 Boosters are available at all King County operated vaccination sites. Check out a list of locations:
kingcounty.gov/vaccines.



Updated January 20, 2022.

<https://kingcounty.gov/depts/health/covid-19/vaccine/~media/depts/health/communicable-diseases/documents/C19/pregnancy-vaccine-boosters-EN.ashx>

bit.ly/covidvax-pregnancy

<https://kingcounty.gov/depts/health/covid-19/vaccine/resources.aspx>

COVID-19 & PREGNANCY

<https://www.acog.org/womens-health/faqs/coronavirus-covid-19-pregnancy-and-breastfeeding>

The screenshot shows the top navigation bar of the ACOG website with links for 'Healthy Living', 'Healthy Teens', 'Healthy Aging', 'Pregnancy', 'Topics A-Z', and 'Experts & Stories'. Below the navigation bar, a 'FAQs' button is visible, leading to the page titled 'Coronavirus (COVID-19), Pregnancy, and Breastfeeding: A Message for Patients'.

Frequently Asked Questions for Pregnant People About COVID and the COVID Vaccine

Should I get a COVID-19 vaccine during pregnancy?

Should breastfeeding women get a COVID-19 vaccine?

Should I get a COVID-19 vaccine if I am trying to get pregnant?

What are the differences between the vaccines?

Do I need a booster shot?

What should I know about the safety of the Johnson & Johnson (J&J) vaccine?





RESOURCES



CON CONFIANZA Y EN COMUNIDAD:

*Hablando sobre COVID-19
y temas que nos afectan*

Con Confianza y En Comunidad

- Acompáñenos cada Martes a las 5pm para recibir la información más actualizada del coronavirus, compartir recursos, sus preocupaciones e identificar soluciones, mientras nos apoyamos uno al otro con confianza y en comunidad.
- Por Facebook: [@CondadodeKing](#)
- Por Zoom: <https://kingcounty.zoom.us/j/95001879122>
- Estas son algunas de las organizaciones que han asistido regularmente: Villa Comunitaria, Centro Rendu/St. Vincent de Paul, Latino Community Fund, Casa Latina, Latino Northwest Communications, King County Promotores Network, University of Washington, Latinx Health Board, El Centro de la Raza, Church Council of Greater Seattle, entre muchos más que comparten la información con sus colegas y las comunidades a las que sirven. ¡Gracias!
- Presentations de con confianza y en la comunidad: <https://www.youtube.com/playlist?list=PLvdmG8argQHmmjRD6YVwSB0XII7cqYgLG>

IMMIGRANT WOMEN'S COMMUNITY CENTER UPCOMING EVENTS



Events in May

- **Monday, 5/16:** Tenant Rights workshop (Darri, Pashto, and Arabic translation available)
- **Monday, 5/23:** Storytelling
- **Wednesday, 5/25:** Caring for Youth and Their Mental Health

COVID-19 Information Session

We'd like to help answer some of your questions and give you the latest COVID-19 updates this **Wednesday, June 1st, at 6:00-7:30 PM**. We'll have a space to come together and talk about the questions, concerns, and thoughts you have about the ongoing pandemic. Any and all questions are welcome!

Register using this link:

<https://us06web.zoom.us/meeting/register/tZcoceGuqT4sH9CDegX8bCjXNNknztY2yKz9>

A Pacific Islander Community Conversation

**Ask the experts
your questions!!**

**Scarlett Ekeroma, MA,
LMFT, CMHP
Elevate Healing, LLC**

**Ofa Langi, MDiv
Pastor @ Auburn City
Church- Seventh Day
Adventist**

**Dr. Malik Fuimaono
Chief Hospitalist at Skagit
Valley Hospital**

Click to Join!

**May 26
6-7PM**

bit.ly/PITalk

Public Health 
Seattle & King County

**Send your questions by email in
advance to Veronica.Lue@kingcounty.gov**

COVID-19 Booster • Mental Health
• The Bible and Vaccines •
Dispelling Myths in the Community

Community Health, Community Wellness, Community Prosperity!!!

Build 2 Lead Legacy Presents:

1st Annual P.O.W.E.R Conference

Prosperity. Opportunity. Wellness. Empowerment. Resiliency

Register NOW!

(limited spots available)

**SCAN QR code FOR
REGISTRATION!**



SCAN ME

THE VISION OF THE BUILD 2 LEAD (B2L) LEGACY WORKSHOPS ARE TO PROVIDE BIPOC AND MULTI-CULTURAL COMMUNITY MEMBERS WITH IMMERSIVE OPPORTUNITIES TO BUILD ON THEIR GENERATIONAL GREATNESS.

IN PARTNERSHIP WITH VIRGINIA MASON FRANCISCAN HEALTH, CAMBIA HEALTHCARE, U.W. MEDICINE PHARMACY SERVICES & STARBUCKS HOMETOWN INITIATIVE, THE P.O.W.E.R CONFERENCE WILL FOCUS ON HIGH SCHOOL AGED STUDENTS AND THEIR FAMILIES.

B2L BELIEVES IN THE P.O.W.E.R OF COMMUNITY AND FOR US, P.O.W.E.R MEANS...

- PROSPERITY
- OPPORTUNITY
- WELLNESS
- EMPOWERMENT
- & RESILIENCY

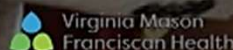
**Day 1: Saturday, May 21, 2022
12PM to 5PM**

**Day 2: Sunday, May 22, 2022
2pm-5pm**

**Location:
Federal Way Community Center
876 S. 333rd St.
Federal Way, WA 98003**

To learn more visit us at:

WWW.BUILD2LEAD.ORG







EMPOWER! ENGAGE! EDUCATE!

FEATURED WORKSHOPS & OPPORTUNITIES

DAY 1: YOUTH & YOUNG ADULTS

PARTICIPANTS WILL HAVE THE OPTION TO ENGAGE IN THE FOLLOWING WORKSHOP TOPICS:

-  MENTAL HEALTH AND WELLNESS
-  PATHWAY TO BECOMING A HEALTHCARE PROFESSIONAL
-  THE IMPACT OF SPIRITUAL MAINTENANCE
-  THE BENEFITS OF CULTURALLY RELEVANT THERAPY

AND MUCH MORE!

DAY 2: YOUNG ADULTS & ADULTS

PARTICIPANTS WILL HAVE THE OPTION OF ATTENDING A CAREER FAIR WITH CORPORATE PARTNERS VIRGINIA MASON FRANCISCAN HEALTH, CAMBIA HEALTH, STARBUCKS, U.W. MEDICAL CENTER AND MORE.

COME AND LEARN ABOUT ENTRY LEVEL JOBS IN HEALTHCARE, RETAIL, AND PARTICIPATE IN ON-SITE INTERVIEWS FOR LOCAL STARBUCKS STORE LOCATIONS!

INCENTIVES!



FOOD!!



STARBUCKS GIFT-CARDS!!
(ALL PARTICIPANTS)



PRIZES!!



\$50 VISA GIFT-CARD!!
(YOUTH ONLY)



GAMES & RAFFLE!!



NETWORKING AND JOB OPPORTUNITIES!!



@build2lead

For general inquiries email:
info@build2lead.org



@Build2Lead



**LET'S BUILD
COMMUNITY
TOGETHER.**

Vets Engaged

Successful applicants will provide community-building activities or events that cultivate a sense of belonging amongst veterans and that help bridge the "civilian-military divide" between veterans, servicemembers and the general population. **Applications due: May 27, 2022**

**Apply Now
At:**

<https://airtable.com/shr71RLsWvQraBF6j>

The **Veterans, Seniors and Human Services Levy (VSHSL)**, administered by the King County Department of Community and Human Services Adult Services Division, promotes healthy living, financial stability, social engagement, housing stability and service system access for veterans, seniors and resilient communities.

kingcounty.gov/VSHSL

Requesting Proposals for Short-Term Engagement Projects for Seniors



New Funding Opportunity from the Veterans, Seniors and Human Services Levy

The Department of Community and Human Services (DCHS) is now accepting applications for small grants of \$25,000 that will fund senior-serving organizations for projects that reduce social isolation and loneliness and support community-building and social connection opportunities for seniors. Funding and guidance provided by the Veterans, Seniors and Human Services Levy (VSHSL) and the [VSHSL Implementation Plan](#).

Funded programs will:

- Address challenges faced by seniors who are experiencing social isolation and/or loneliness
- Support senior participants to build meaningful social connections
- Reflect the needs and interests of the community/communities being served
- Offer activities that are not currently funded through another VSHSL strategy, either because the applicant does not currently receive VSHSL funding, or because the proposed project is meaningfully distinct from current services funded through the VSHSL

Available funding: Up to \$150,000 in VSHSL funds

Investment period: August 1, 2022 – December 31, 2023 (subject to change)

Questions: Contact Virginia Weihs at vweihs@kingcounty.gov

Applications due: June 14, 2022 by 5:00 pm

Apply Now at:

<https://www.zoomgrants.com/gprop2.asp?donorid=2209&rfpid=4033>

The Pandemic Emergency Assistance Fund (PEAF) is a one-time payment for the month of May 2022.

The PEAFF benefit amount will be \$127 per eligible child.

In order to qualify for PEAFF, families must meet all of the following:

- Have a minor child in the home,
- The minor child received cash or basic food benefits for the month of May 2022, and
- Have income at or under 75% of the Federal Poverty Level.

Families do not need to apply for this benefit.

The cash payment will automatically be issued if their household is eligible.

If a household qualifies for a payment, they will receive a letter with more information.



STATE OF WASHINGTON
DEPARTMENT OF SOCIAL AND HEALTH SERVICES
COMMUNITY SERVICES DIVISION
Economic Services Administration
Post Office Box 45440 Olympia WA 98504-5440

April 20, 2022

Dear Stakeholders and Community Partners,

In March 2021, the American Rescue Plan Act was signed into law and provided funding for the Pandemic Emergency Assistance Fund. PEAFF was created to provide additional assistance to low-income families with eligible children during the COVID-19 crisis and is funded through both federal and state funds.

PEAFF is a one-time, non-recurrent cash payment for the month of May 2022. The PEAFF benefit amount will be \$127 per eligible child.

In order to qualify for PEAFF, families must meet all of the following:

- Have a minor child in the home,
- The minor child received cash or basic food benefits for the month of May 2022, and
- Have income at or under 75% of the Federal Poverty Level.

Families do not need to apply for this benefit; the cash payment will automatically be issued if their household is eligible. If a household qualifies for a payment, they will receive a letter with more information.

This new benefit is an additional resource for families and we are happy to provide it to our communities. For additional information about PEAFF, please visit [DSHS.wa.gov](https://dshs.wa.gov).

Thank you.

Sincerely,

A handwritten signature in blue ink, appearing to read 'Babs Roberts'.

Babs Roberts / Director / Community Services Division
Economic Services Administration

Department of Social and Health Services
(O) 360-725-4888 / (C) 360-628-1975 / babette.roberts@dshs.wa.gov
She/her/hers

Transforming Lives

MASK RESOURCES AND REMINDERS

King County

Search Kingcounty.gov

Home How do I... Services About King County Departments

Public Health — Seattle & King County
COVID-19 resources

Home >> Public Health — Seattle & King County >> COVID-19 resources >> Current guidance >> Face masks

Face masks

Masks remain an important tool in helping to limit the spread of COVID-19.

People who are immunocompromised, unvaccinated, or feel sick should wear masks when in indoor public spaces. Children ages 2-4 are encouraged to wear a mask with a chin strap, and children under age 2 should never wear masks.

Masks are required in:

- Healthcare and medical facilities, including hospitals, outpatient, dental facilities, and long-term care settings
- Long-term care settings
- Public transit, taxis, rideshare vehicles (federal requirement)
- Correctional facilities

Private businesses, organizations, schools and childcares may require you to wear masks. People's choices to continue to wear a mask.

If you are immunocompromised or unvaccinated:

- Wear a snug-fitting, high-quality mask that covers your nose and chin.
- Wear the best quality mask you can get. Examples, in order of quality are:
 - Certified N95, KN95, or KF94 masks; or
 - Surgical masks; or
 - Cloth masks with multiple layers of breathable, tightly-woven fabric.

If you test positive or are exposed to COVID-19:

- Wear a snug-fitting, high-quality mask for 10 days.

Languages -

- አማርኛ - Amharic
- العربية - Arabic
- 简体字 - Chinese, Sim.
- 繁體字 - Chinese, Trad.
- 한국어 - Korean
- Kajin Majeļ - Marshallese
- Русский - Russian
- Af Soomaali - Somali
- Español - Spanish
- Wikang Tagalog/Filipino - Tagalog/Filipino
- Українська - Ukrainian
- Tiếng Việt - Vietnamese

kingcounty.gov/masks

UPDATED MASK WEBSITE: kingcounty.gov/masks

Find free masks

- [查找免费口罩 \(N95防护面罩\) \(Simplified Chinese\)](#)
- [Find Free Masks \(N95 Respirators\) \(English\)](#)
- [무료 마스크\(N95 호흡보호구\) 찾기 \(Korean\)](#)
- [Encuentre mascarillas \(respiradores N95\) gratis \(Spanish\)](#)
- [Tìm khẩu trang miễn phí \(khẩu trang N95\) \(Vietnamese\)](#)

Face masks

Masks remain an important tool in helping to limit the spread of COVID-19.

People who are immunocompromised, unvaccinated, or feel sick should wear masks when in indoor public spaces. Children ages 2-4 are encouraged to wear a mask with a parent. Children under age 2 should never wear masks.

Masks are required in:

- Healthcare and medical facilities, including hospitals, outpatient, dental facilities, and long-term care settings
- Public transit, taxis, rideshare vehicles (federal requirement)
- Correctional facilities

Private businesses, organizations, schools and childcares may require you to wear a mask. People's choices to continue to wear a mask.

If you are immunocompromised or unvaccinated:

- Wear a snug-fitting, high-quality mask that covers your nose and chin.
- Wear the best quality mask you can get. Examples, in order of quality are:
 1. Certified N95, KN95, or KF94 masks; or
 2. Surgical masks; or
 3. Cloth masks with multiple layers of breathable, tightly-woven fabric.

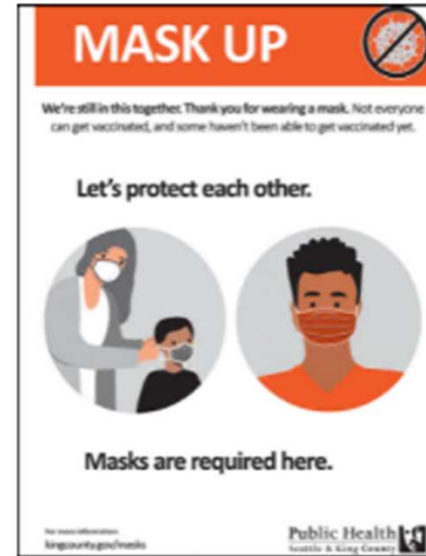
If you test positive or are exposed to COVID-19:

- Wear a snug-fitting, high-quality mask for 10 days.



Posters

Locations where masks are required by federal and state law



Mask up: Let's protect each other

አማርኛ (Amharic)	العربية (Arabic)
简体字 (Chinese, Sim.)	繁體字 (Chinese, Trad.)
English	한국어 (Korean)
Kajin Majeļ (Marshallese)	Русский (Russian)
Af Soomaali (Somali)	Español (Spanish)
Wikang Tagalog/Filipino (Tagalog/Filipino)	Українська (Ukrainian)
Tiếng Việt (Vietnamese)	

Some people may not be able to wear face coverings

For Deaf, Hard of Hearing, and Blind Community Members

UPDATED MASK WEBSITE: kingcounty.gov/masks

Businesses, employers, schools, childcares, and organizations

Private businesses, organizations, schools and childcares may still choose to have their own mask requirements, even after the government requirement for masks is lifted. These posters can be used by establishments who choose to set their own mask policy.

The “Mask Optional” poster created for businesses and organizations that choose to require masks is now available in other languages.

And additional masks.



Masks are required here

አማርኛ (Amharic)	العربية (Arabic)
简体字 (Chinese, Sim.)	繁體字 (Chinese, Trad.)
English	한국어 (Korean)
Kajin M̧ajeļ (Marshallese)	Русский (Russian)
Af Soomaali (Somali)	Español (Spanish)
Wikang Tagalog/Filipino (Tagalog/Filipino)	Українська (Ukrainian)
Tiếng Việt (Vietnamese)	



Masks optional

አማርኛ (Amharic)	العربية (Arabic)
简体字 (Chinese, Sim.)	繁體字 (Chinese, Trad.)
English	한국어 (Korean)
Kajin M̧ajeļ (Marshallese)	Русский (Russian)
Af Soomaali (Somali)	Español (Spanish)
Wikang Tagalog/Filipino (Tagalog/Filipino)	Українська (Ukrainian)
Tiếng Việt (Vietnamese)	



Mask considerations

MASK RESOURCE REMINDER

Links to additional resources:

- [Overview of King County's mask Directive, FAQ, and more general information about face coverings](https://kingcounty.gov/masks) (kingcounty.gov/masks)
- [Poster for King County businesses/organizations that have public indoor spaces](#) (PDF)
- [FAQ for King County businesses/organizations about masks and indoor spaces](#) (PDF)
- [Washington state Labor & Industries mask and distancing requirements for businesses](#) (PDF)

MASK RESOURCE REMINDER

kingcounty.gov/masks

Infographic about why the mask mandate is lifting on March 11, 2022

The King County indoor mask order ends March 11, 2022.



How will mask requirements change on March 12?

King County will no longer require masks in many indoor public spaces:

- Schools, childcare facilities and libraries
- Restaurants and bars
- Church, mosques, temples, and other houses of worship
- Gyms, and other sports facilities
- Grocery and other stores and other businesses




አማርኛ (Amharic)	العربية (Arabic)	မြန်မာဘာသာ (Burmese)	简体字 (Chinese, Sim.)
繁體字 (Chinese, Trad.)	دري (Dari)	English	فارسی (Farsi)
Français (French)	हिन्दी (Hindi)	Hmoob (Hmong)	日本語 (Japanese)
ភាសាខ្មែរ (Khmer)	한국어 (Korean)	ພາສາລາວ (Lao)	Kajin Majeļ (Marshallese)
नेपाली (Nepali)	Afaan Oromoo (Oromo)	پښتو (Pashto)	Polski (Polish)
Português (Portuguese)	ਪੰਜਾਬੀ (Punjabi)	Română (Romanian)	Русский (Russian)
Gagana fa'a Sāmoa (Samoan)	af Soomaali (Somali)	Español (Spanish)	Wikang Tagalog/Filipino (Tagalog/Filipino)
ภาษาไทย (Thai)	ትግርኛ (Tigrinya)	lea faka-Tonga (Tongan)	Українська (Ukrainian)
Tiếng Việt (Vietnamese)			



For more information about COVID-19:

kingcounty.gov/covid

Public Health 
Seattle & King County